


MIDDLE & SENIOR LEADERS

Sheffield, Rotherham, and Barnsley

Join us for

Supporting Recovery Training Programme

A **free six module online programme**, designed to support **middle & senior leaders** to make purposeful use of educational evidence & identify areas for development and enact strategies to improve teaching and learning.

[Book here](#) 



Each online 90-minute session will be tailored to address challenges and opportunities in your local region, exploring high quality teaching, targeted interventions and wider strategies as well as planning and implementing your school's approach to education recovery.



Dates Supporting recovery: making evidence informed choices

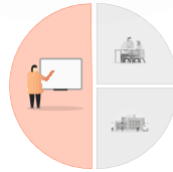
Thursday 26th May 2:00pm – 3:30pm

Thursday 9th June 2:00 – 3:30pm



Module 1

The Tiered Approach:
Unpacking High
Quality Teaching



Module 2

Diagnostic Assessment
Best Bets and Missteps

Thursday 16th June 2:00pm – 3:30pm

Thursday 23rd June 2:00pm – 3:30pm



Modules 3 & 4

Using Evidence in
Choosing Interventions
and Approaches &
evidence-informed
wider strategies



Modules 5 & 6

Towards Evidence
Informed School
Improvement Planning

All enquiries to: office@pro.learnat.uk

[Book here](#)



Education
Endowment
Foundation

